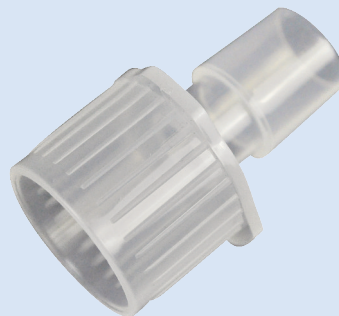


Straight Connector



Instructions For Use:

- Used for Anesthesia Breathing Circuits.
- To connect the circuits.
- Before using, make sure connect tight for every parts, to avoid the leakage.

Features:

- Material: medical grade PP, PVC or AS .
- Different type can be optional.

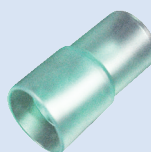
Size	Ref	Material
22M-22F	328-1-12B	PP
15M-22F	328-2-12B	PP
22F	328-3-12B	PVC
22F	328-4-12B	PVC
22M-22M/15F	328-5-12B	PP
22M-22M	328-6-12B	PP
15M-22M/15F	328-7-12B	AS
15M-22F	328-8-12B	AS
15M-15F	328-9-12B	AS
15M-15M	328-10-12B	PP
15M-15M	328-11-12B	AS



REF: 328-1-12B
22M-22F



REF: 328-2-12B
15M-22F



REF: 328-3-12B
22F-19M



REF: 328-4-12B
22F-15M



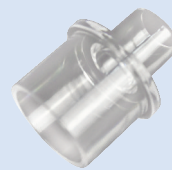
REF: 328-5-12B
22M-22M/15F



REF: 328-6-12B
22M-22M



REF: 328-7-12B
15M-22M/15F



REF: 328-8-12B
15M-22F



REF: 328-9-12B
15M-15F



REF: 328-10-12B
15M-15M



REF: 328-11-12B
15M-15M

Caution:

1. Read instruction for use before using the device.
2. This product is for single use only, discard after single use. Do not clean, do not use it once again.
3. Do not use it if the package be affected with damp, or the product went moldy.
4. Do not use after expiry date. If over the expiry date, please discard it.
5. Non-sterile. Single use only. Latex free.

Storage:

Store in a cool, dry and dark place. Avoid direct sunlight.

Straight Connector



Secured Medical Direction UK Co., Ltd.

Wayson Commercial Bldg 28 Con-naught Rd West Sheung Wan HK, P.R.C.



Secured Medical Direction UK Co., Ltd.

St. James House 13 Kensington Square W8 5HD London U.K.

www.smd-medical.com