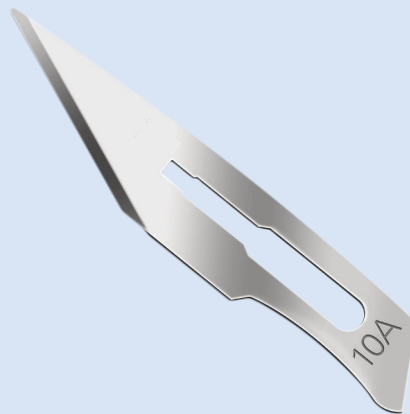


Surgical Blade



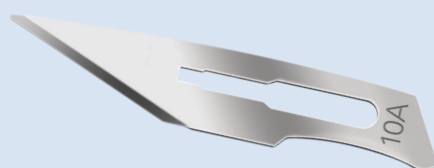
Instructions For Use:

- Be assembled on the surgical knife handles for the surgeons to cut the soft tissues.
- Tearing open according to the indicated directions of the words on the middle packing and the small packing, then showing the end of the blade, taking the blade and assembling the blade on the matched knife handle.
- The packing of this product is sterile and it can be ensured that it is used safely before its expiry date.
- The property of the sterilization can be ensured that the product will be for single use.

Features:

- Material: stainless steel or carbon steel.
- Size: 10#, 11#, 12#, 13#, 14#, 15#, 16#, 18#, 19#, 20#, 21#, 22#, 23#, 24#, 25#.
- Fine sharp edge.
- This type is without handle.

Size	Carbon steel / Ref	Stainless steel / Ref
10 #	121-C-10-20A	121-S-10-20A
11 #	121-C-11-20A	121-S-11-20A
12 #	121-C-12-20A	121-S-12-20A
13 #	121-C-13-20A	121-S-13-20A
14 #	121-C-14-20A	121-S-14-20A
15 #	121-C-15-20A	121-S-15-20A
16 #	121-C-16-20A	121-S-16-20A
18 #	121-C-18-20A	121-S-18-20A
19 #	121-C-19-20A	121-S-19-20A
20 #	121-C-20-20A	121-S-20-20A
21 #	121-C-21-20A	121-S-21-20A
22 #	121-C-22-20A	121-S-22-20A
23 #	121-C-23-20A	121-S-23-20A
24 #	121-C-24-20A	121-S-24-20A
25 #	121-C-25-20A	121-S-25-20A



Caution:

1. Read instruction for use before using the device.
2. This product is sterilized for single use only, discard after single use. Please do not repeat sterilization, do not clean, do not use it once again.
3. Should be used the product immediately after opening the individual package, please destroy when it was used.
4. Do not use it if the inner package has been previously opened or damaged, or package be affected with damp, or the product went moldy.
5. Do not use after expiry date. If over the expiry date, please discard it.
6. Sterile by gamma. Single use only. Latex free.

Storage:

Store in a cool, dry and dark place. Avoid direct sunlight.

Surgical Blade



Secured Medical Direction UK Co., Ltd.

Wayson Commercial Bldg 28 Con-naught Rd West Sheung Wan HK, P.R.C.



Secured Medical Direction UK Co., Ltd.

St. James House 13 Kensington Square W8 5HD London U.K.

www.smd-medical.com