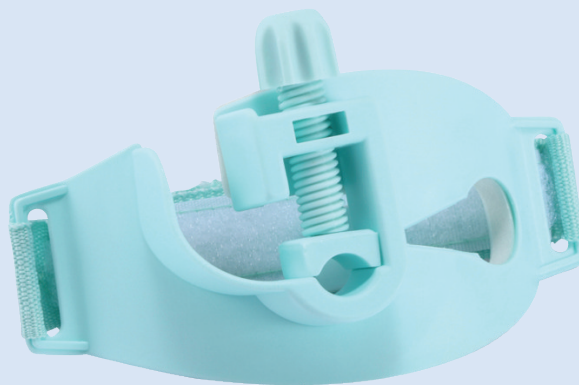
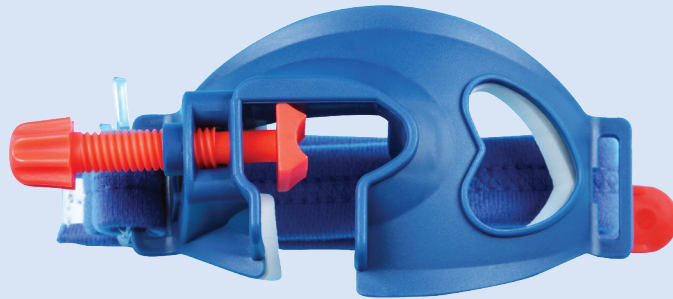


Endotracheal Tube Holder



Instructions For Use:

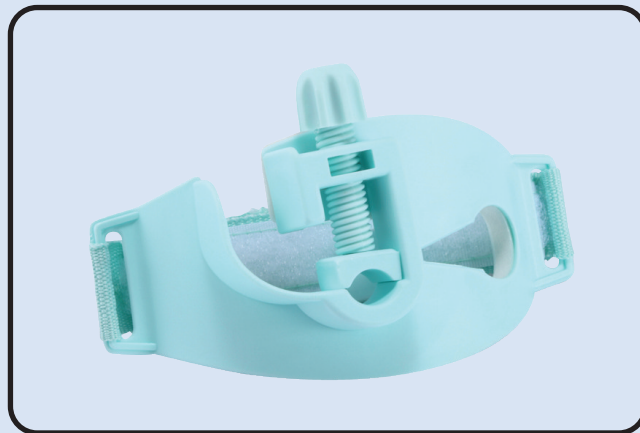
- For comfortable and secure stabilization. This product is mainly used by anesthetist.
- Anesthetist inserts endotracheal tube into trachea and fixes the endotracheal tube with this holder.
- Firstly put endotracheal tube into the center hole of the holder.
- Retain the tube in the appropriate position, then use the screw to fasten the tube.
- Finally fix the holder around a patient's chin and the base of patient's head with strap

Features:

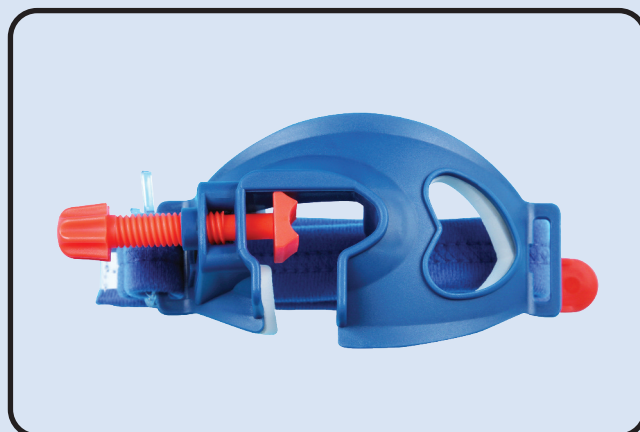
- Material: Be made from medical grade PP.
- Fits various sizes of endotracheal tubes, from ID5.5 to ID10.0.
- Type B accommodates Laryngeal Mask Airway (full range from size 1# to size 5#) as well.
- Fully padded to back for patient comfort. Allows for in-use suctioning of the oropharynx.

Type	Ref	Material	Remarks
A	249-1-20B	PP	For ETT tube
B	249-2-20B	PP	For ETT tube and laryngeal mask airway

Type A



Type B



Caution:

1. The operator for this product must be trained by professional training.
2. This product is sterilized for single patient use only, please destroy when it was used, please do not repeat sterilization, don't use it once again.
3. Should be used immediately when opening the package, please destroy when it was used.
4. Do not use if the packing damaged, or packing be affected with damp, or the product went moldy.
5. Sterile by ETO, Single use only, Latex free.

Storage:

Store in a cool, dry and dark place. Avoid direct sunlight.

Endotracheal Tube Holder



Secured Medical Direction UK Co., Ltd.

Wayson Commercial Bldg 28 Con-naught Rd West Sheung Wan HK, P.R.C.



Secured Medical Direction UK Co., Ltd.

St. James House 13 Kensington Square W8 5HD London U.K.

www.smd-medical.com